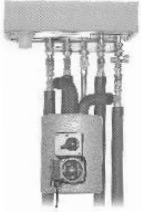


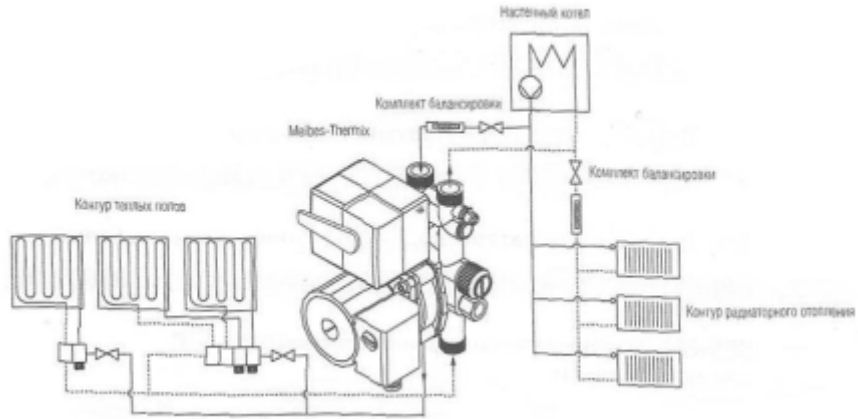
**Thermix -**



Wilo Pumpe HU 15/4-2-3	ME 27401	24 075
Wilo Pumpe HU 15/6-2-3	ME 27401.1	24 210

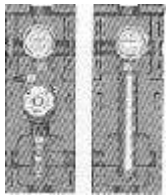
(25-50 ° )

Wilo Pumpe HU 15/6-2-3	ME 27409.1	25 515



**V-UK/V-MK, DN 25-32 ( 120 )**

**V-UK ( )**

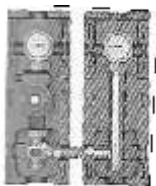


( , EPS- -1 1/2" HP ( )

6 . . .

1"	ME 66713 EA	8 280
1 1/4"	ME 66714 EA	11 340

**V-MK ( c )**



EPS- (200-250 ) -1 1/2" HP ( )

6 . . .

V-MK 180

1"	ME 66733 EA	12 285
1 1/4"	ME 66734 EA	15 930